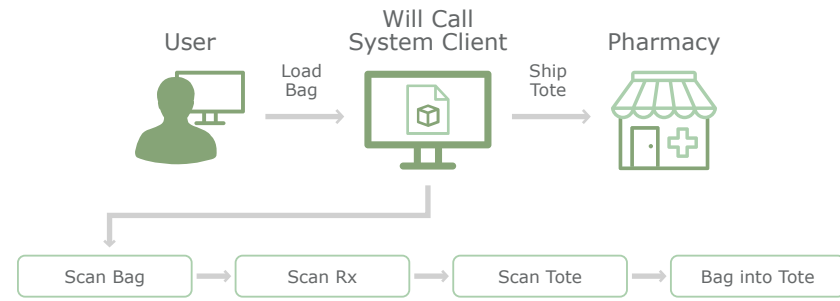


# Central Fill Workflow:

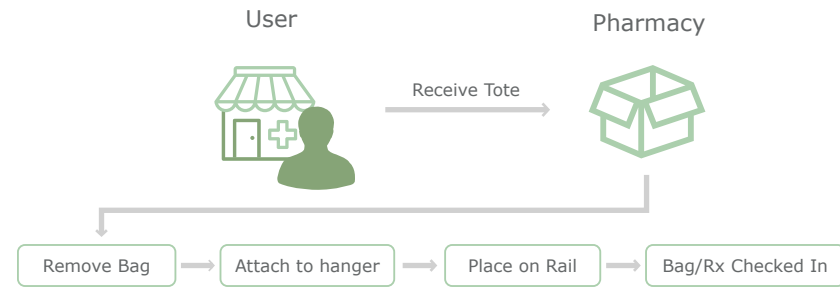
## 1) Loading and Shipping Totes:

In the Central Fill Pharmacy, the user loads prescriptions belonging to a single patient into a bag. The loaded bag is then scanned into the destination pharmacy's tote. The completed tote is shipped to the pharmacy and the pharmacy has real-time visibility as to the prescriptions in the tote.



## 2) Tote Check-In:

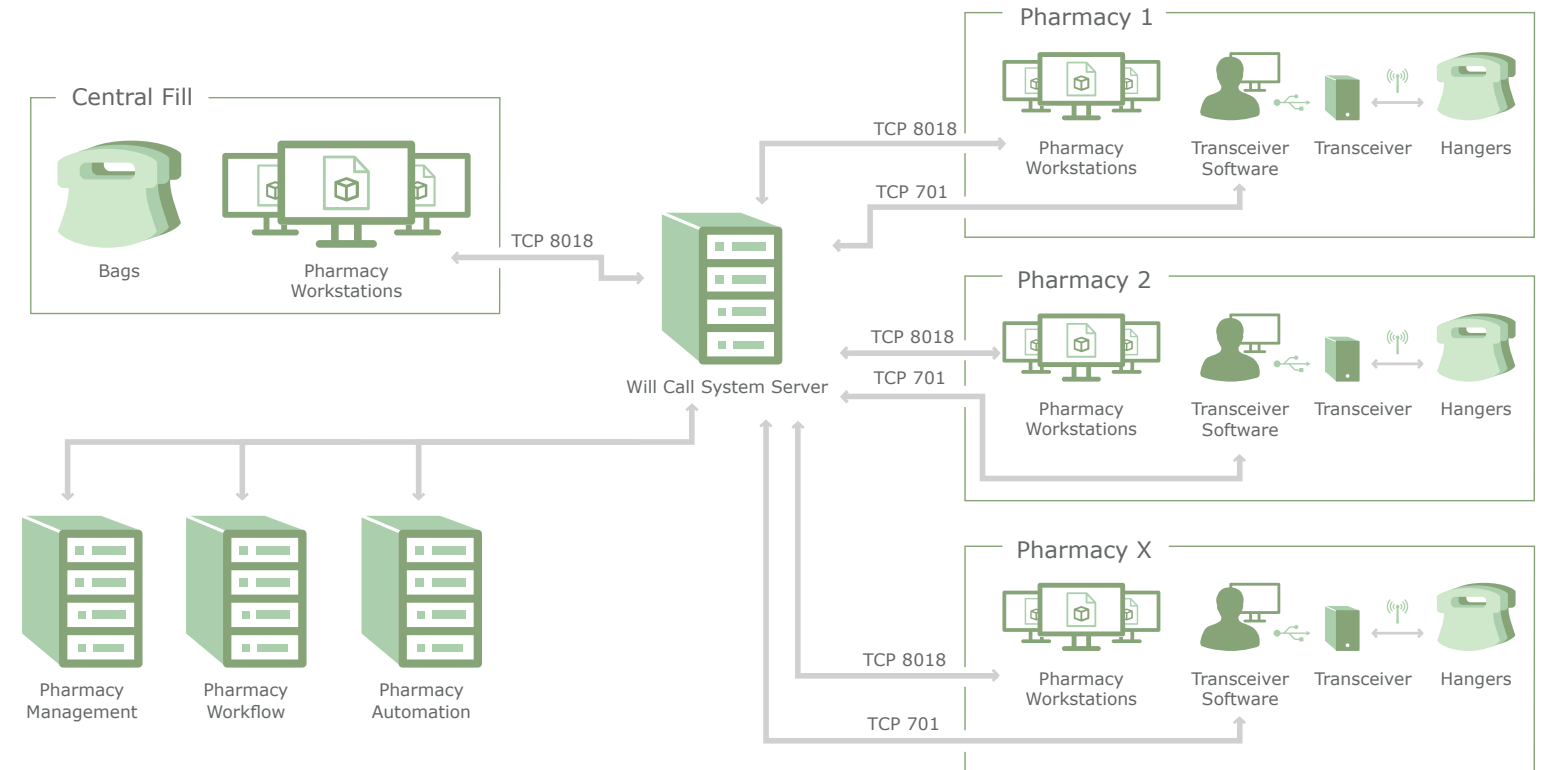
When the tote arrives at the destination pharmacy, the user attaches each bag to a hanger and hangs it on the rail system. The Will Call System will detect the hanger and automatically check the bag and its contents into the pharmacy's local Will Call System inventory.



## 3) Reverse Logistics Available:

- Review "return to stock" Logistics from pharmacy to central fill.
- Available as an option.

# Network Architecture



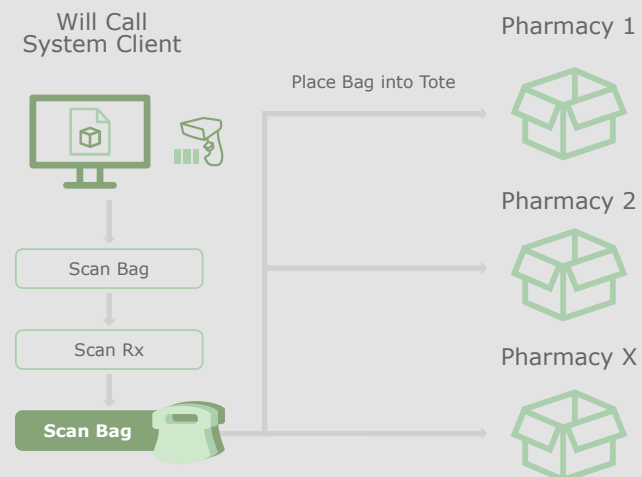
# PickPoint® Will Call System Central Fill is flexible—built for how your teams work.

## Toting Methods

The Will Call System software can be configured to use one of several methods to load bags and tote them for shipping. The workflow for each method are very similar with slight variations as shown below.

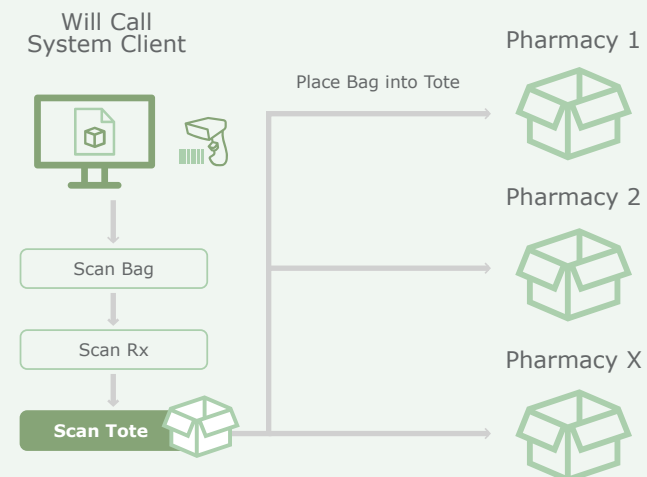
### Automatic During Load

If the destination pharmacy is included in the prescription information provided by the Pharmacy Management System, **the WCS software can automatically assign the bag to the destination pharmacy's tote.**



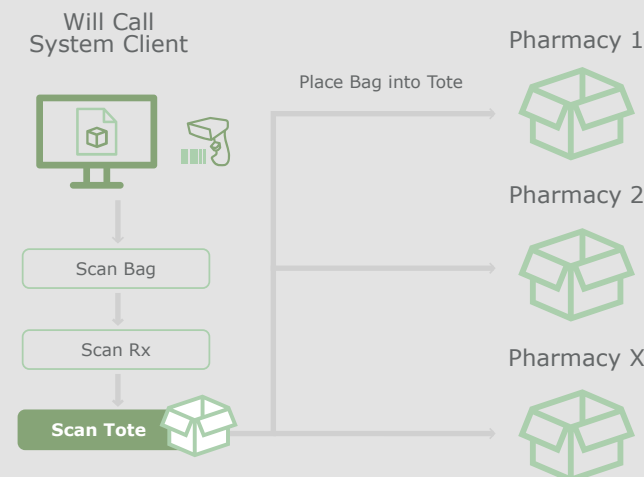
### Tote Scan During Load

If the destination pharmacy is included in the prescription information provided by the Pharmacy Management System, **the User can scan the destination pharmacy's tote barcode to verify the bag is being placed into the correct tote.**



### Manual Assignment

If the destination pharmacy is **NOT** included in the prescription information provided by the Pharmacy Management System, **the User can scan the destination pharmacy's tote barcode to manually assign the bag to the tote.**



### Dedicated Scanners

If the destination pharmacy is included in the prescription information provided by the Pharmacy Management System, **the User can perform the entire loading process using specially programmed barcode scanners assigned to each pharmacy.** The Will Call System software verifies that the scanner used is tied to the prescription's destination pharmacy, thus ensuring the bag is being put into the correct tote.

